

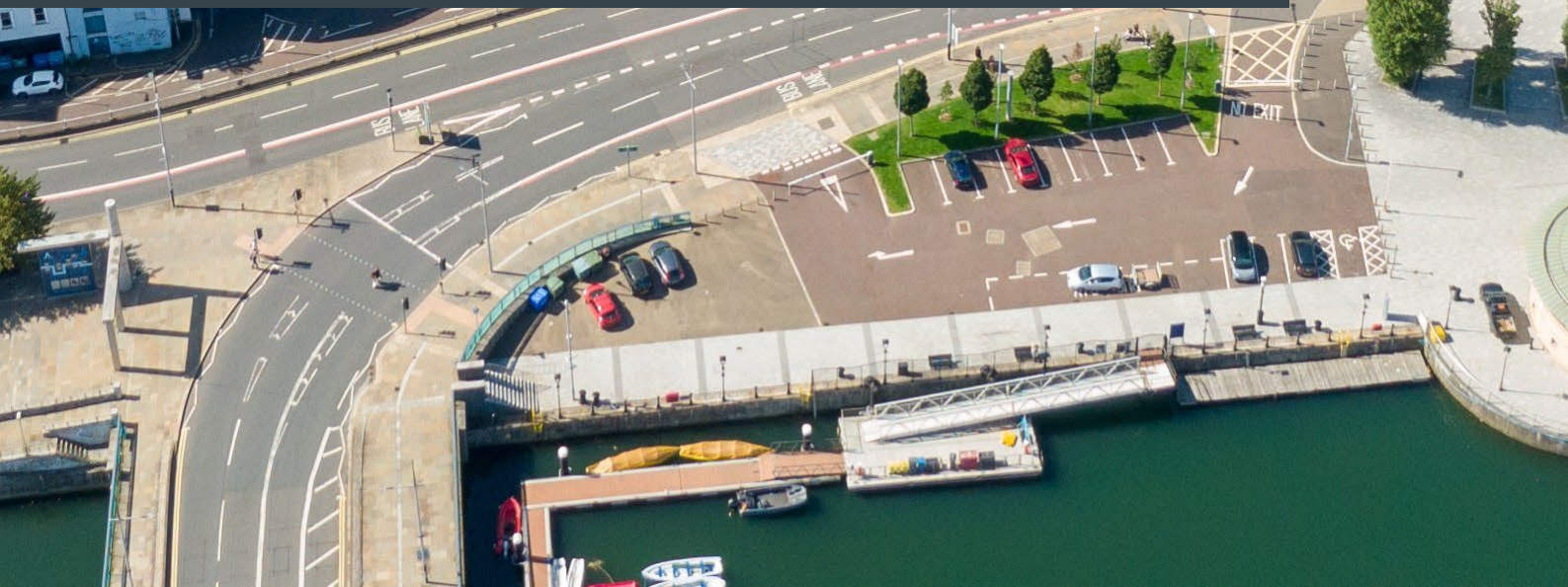


CONFERENCE



UK&I Commercial Property Conference

Surveying tomorrow: Navigating technology, sustainability, and market shifts in the UK commercial property sector (Cavendish Conference Centre, London)



Course level

Foundation



Type of event

Face to face



CPD Hours

6
Formal



Included in

CPD Support Package

Book your place today

[Click here](#)

Join us at the annual UK & I Commercial property conference where industry leaders will share cutting edge insights on sustainability, retrofitting, digital innovation, creative spaces and wider discussions unique to this event.

Our morning sessions will focus on sustainability, where a distinguished panel of experts will offer actionable insights on how surveyors can effectively tackle the Net Zero challenge. Dive deeper into crucial topics such as standardising green requirements and achieving biodiversity net gain, ensuring you stay ahead in this evolving landscape. Additionally, don't miss the opportunity to explore the practicalities of retrofitting in commercial real estate through a dynamic compare-and-contrast session titled 'Cracking the retrofit code and its feasibility.'

Kickstart the second half of the day with an unmissable session on 'Responding to digital disruption and navigating the AI revolution,' where industry pioneers will share practical insights on how digital transformation is reshaping the commercial property sector. Additional sessions will look at the occupier's voice in property evolution where experts will discuss how to enhance relationships between occupiers and landlords by focusing on sustainability initiatives, lease flexibility, and improving employee experiences. Wrap up your day with a talk on creative spaces that will reveal how permanent creative spaces can drive successful developments.

Programme

Day 1



UK&I
10 Dec 24

Time zone:

GMT

8:30

Registration and Networking

9:15

Welcome & opening remarks

Welcome to the Commercial Property 2024 conference with an introduction to the RICS Professional Group Panel and their role along with chair's remarks.

Speaker: Jo Hawkings MRICS, Partner, Bidwells

9:30

Opening keynote

Join us to hear about global themes, their implications for the UK commercial property market, and the value this conference brings in sparking debate and sharing best practice.

9:45 am
4

Market and economic updates

Our resident economist will present on market trends, the outlook of professionals in the sector and present the findings of the RICS UK Economy and Property market update for 2024 Q4. This will be followed by a panel discussion consisting of responses from a market specialist, sustainability expert, and service provider.

Speaker(s): Simon Rubinsohn, Chief Economist, RICS

Jennet Siebrits, Head of Research, CBRE UK

James Roberts, Economist and UK Insights Director, Avison Young

10:50

Refreshment break



Time zone:

GMT

11:20

Focusing on sustainability

Sustainability is rapidly emerging as a critical factor for occupiers when choosing buildings. To enhance the standardisation of green requirements, surveyors can play a pivotal role by advocating for clear sustainability benchmarks that benefit both occupiers and landowners. By championing these green standards, surveyors can position themselves as leaders in the green transition, helping clients navigate the complexities of sustainable building practices. What are additional strategies that can be put in place for surveyors to meet the Net Zero challenge? Join us as we explore this topic in greater depth.

Speaker(s): Moderator: Munish Datta, Chair of the Business Sustainability Programme, CISL
Sarah Bateman, CEO, Unify Energy
Helen Newman, Group Head of Sustainability, Bidwells

12:20

Cracking the retrofit code and its feasibility

Retrofitting is often regarded as the ideal solution for improving performance, functionality, and safety of existing buildings, but is that always the case? In this session, our expert speakers will dive deep into compelling case studies which will examine the implementation of retrofitting. By analysing varying projects, we will offer unique insights into when and exactly how retrofitting truly adds value and what potential drawbacks there could be. This discussion will enable you to have a better understanding of how to make informed decisions that maximise building performance.

Speakers: Tom Venner, Chief Development Officer, Canary Wharf Group
Tim Gledstone, Senior Partner, Squire and Partners

13:15

Lunch



Time zone:

GMT

14:15

Responding to the digital disruption and navigating the AI revolution that is reshaping the property industry

Join a cutting-edge panel discussion hearing from industry pioneers and tech visionaries as they explore the digital transformation of our industry. From AI-powered valuations to blockchain transactions, they will unpack the opportunities and threats facing modern surveying practices and delve into the world of proptech innovations, cyber security challenges and the regulatory tightrope walk. Discover how to harness the power of technology while safeguarding your professional edge in this increasingly digital property market.

Speaker(s): Moderator: Andrew Knight, Global Data and Tech Lead, RICS
Tim Wood, CTO, The Arch Co
Kate Jarvis, Co-Founder, Fifth Dimension AI
Michael Gedye MRICS, EMEA Head of Technology Media, CBRE

15:15

Creative spaces

Is permanent creative workspace a viable long-term solution to thriving high streets and successful development projects? Creative spaces are becoming an emerging sub-sector within commercial real estate, but how can it improve value, generate ESG and social impacts and attract diverse groups of investors? The panel will bring together developers, investors, creative space providers and local authorities to explore the value of spaces for arts and culture, existing and emerging models and case studies of successful creative placemaking beyond major culture and leisure-driven projects.

Speaker(s): Moderator: Clare Bailey, Director Commercial Research, Savills
Gavin Hubrich, Head of Mixed Use Sales, Mount Anvil
Eline van der Vlist, CEO, Space Studios

16:15

Chair's closing remarks

Speaker(s): Jo Hawkings MRICS, Partner, Bidwells

16:30

Networking refreshment break

Delivering confidence

We are RICS. Everything we do is designed to effect positive change in the built and natural environments. Through our respected global standards, leading professional progression and our trusted data and insight, we promote and enforce the highest professional standards in the development and management of land, real estate, construction and infrastructure. Our work with others provides a foundation for confident markets, pioneers better places to live and work and is a force for positive social impact.

Americas, Europe, Middle East & Africa
aemea@rics.org

Asia Pacific
apac@rics.org

United Kingdom & Ireland
contactrics@rics.org



[rics.org](https://www.rics.org)