

CONFERENCE



Global Sustainability

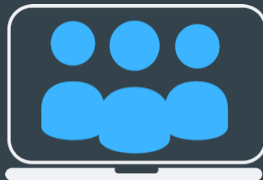
5 December || Online

Shaping a sustainable future: The built and natural environment's journey



5 December

CST GST GMT EST



Online

Introducing an exclusive event, the Global Sustainability conference provides an opportunity for key stakeholders to engage in critical discussions on latest sustainability practices in the built and natural environment.

Featuring a line-up of keynotes, panel discussions and specialised sessions, the event focuses on RICS' vision for a sustainable built and natural environment. It explores cutting edge trends relating to environmental, social, economic and governance aspects of sustainability whilst fostering debates on practical approaches for integrating new practices across the industry.

Over one day, participants will build a picture of the current landscape and will gain exclusive knowledge of latest industry practices, guidance, and insights.

By joining the conference attendees will:

- Delve into how sustainable practices are being implemented within the built environment
- Explore how advancements in data analytics, AI, IoT, and other emerging technologies are driving sustainability within the built and natural environments
- Prepare for political and economic shifts that may impact sustainability efforts and understand how to navigate these changes effectively
- Learn to integrate ESG criteria into financial decision-making and real estate valuations and grasp the implications and dynamics within the market.

The event will conclude with a call to action, providing delegates with the knowledge, tools, and partnerships needed to foster collaboration.

Join us for an engaging day designed to inspire transformative discussions and provide actionable takeaways that will empower participants to push the boundaries of what's possible in sustainability. This conference is set to inspire attendees to strive for groundbreaking advancements in their fields, contributing significantly to the global sustainability agenda.





Thursday 5 December



Time zones:

CST GST GMT EST

CST¹ GST² GMT³

15:30 11:30 07:30 Registration and virtual networking

16:00 12:00 08:00 Introduction from RICS and welcome keynote address: Setting the stage for a sustainable transformation

The opening introduction and keynote address promises to be both visionary and grounding, as it outlines RICS' commitment to sustainability within the built and natural environments. It emphasises the critical urgency of addressing the climate crisis and demonstrates the pivotal role of our profession in spearheading this transformative journey. This session will set a powerful tone for subsequent discussions, underscoring our collective mandate to confront and master the planet's most pressing challenges, ensuring a sustainable future for all.

- Discuss the critical global trends such as climate change, resource depletion, and urbanisation pressures that are reshaping the built and natural environments. Explore how these trends necessitate a strategic rethink in our approach to development and sustainability.
- Align with RICS' vision that seeks to champion sustainable development across the globe.
- Examine the intricate risks associated with shifting towards sustainable practices—economic fluctuations, policy evolutions, and technological breakthroughs. How these challenges can be navigated successfully, ensuring that sustainability efforts are both equitable and inclusive, and fostering opportunities for growth across diverse demographics and regions.
- Be inspired to actively contribute towards the SDGs, applying the knowledge and strategies shared to effect tangible, impactful changes in society.

Introduction by conference chair: Emma Fletcher MRICS, Low Carbon Homes Director, Octopus Energy and Chair - RICS Residential Professional Group Panel, UK

Welcome keynote: Tina Paillet FRICS, President, RICS

¹ China Standard Time

² Gulf Standard Time

³ Greenwich Mean Time

16:20	12:20	08:20	Short comfort break
16:30	12:30	08:30	<p>Navigating the path to net zero: How prepared are we to implement transformative carbon strategies?</p> <p>This session is dedicated to advancing the understanding and application of carbon assessments within the built environment, highlighting its pivotal role in combating climate change and promoting sustainable development. It aims to arm professionals across the global construction and urban planning sectors with cutting-edge tools, innovative strategies, and comprehensive insights to effectively reduce carbon emissions.</p> <ul style="list-style-type: none"> • How to integrate carbon assessment practices into the planning, development, and management of built environments to meet global carbon reduction targets and mitigate the effects of climate change. • Explore the latest advancements in tools and technologies for carbon assessment, to transform the accuracy and efficiency of real-time carbon monitoring and decision-making. • Understand the evolving regulatory landscape that shapes carbon assessment practices worldwide, focusing on both the challenges and opportunities these regulations present. • What is the impact and application of the RICS Whole Life Carbon Assessment Standard in guiding industry practices towards comprehensive carbon management and accountability throughout the lifecycle of a project. <p>Moderator: Amit Patel MRICS, Head of Professional Practice- Construction, RICS, UK</p> <p>Panel:</p> <ul style="list-style-type: none"> • Sobha Rani FRICS, Founder, Veadik Consulting Solutions Pvt Ltd & Esttareal Solutions Pvt Ltd., India • Heather Evans, Partner, Head of Sustainability UK & Europe, Global Sustainability Lead, RLB • Francesco Pomponi, Chair of Sustainability & Environment, University of York, Senior Associate, University of Cambridge & Co-Founder and CSO, Preoptima, UK • Simon Sturgis, Founder, Targeting Zero LLP, UK • David Kelly, Director Engineering Sustainable Infrastructure, Technical, Design & Engineering, Infrastructure Projects & Engineering, Transport for NSW, Australia
17:15	13:15	09:15	Short comfort break
17:30	13:30	09:30	<p>Investing in tomorrow: Integrating ESG into financial decisions</p> <p>This session will explore innovative models that integrate ESG criteria into financial decision-making, emphasising the correlation between investment value and sustainable practices. It will delve into how the sector is building investor confidence through data that mobilises capital, the challenges of ESG integration, and the impact on lending and investment landscapes.</p>

- How ESG factors are increasingly incorporated into financial decisions, focusing on risk assessment and its influence on investment strategies
- Understand the critical role of transparent and comprehensive financial reporting in ESG integration. How incorporating ESG metrics into financial reports aids lenders, investors, and regulators in assessing the sustainability performance of borrowers and projects.
- Explore the motivations behind the rising demand for ESG-focused lending and investment products—whether driven by investor demand, regulatory frameworks, or market dynamics.
- What are the methodologies for assessing ESG risks, the tools and data utilised, and their implications on financial decision-making? Discuss how these criteria influence the selection and valuation of assets.

Moderator: Frank HOVORKA MRICS, RICS Board member, Sustainability Chair and Director, FPI, France

Panel:

- Sam Chandan FRICS, Director of the Center for Real Estate Finance, NYU Stern, USA
- Flora Harley, Head of ESG Research, Knight Frank, UK
- Sarah Ratcliffe, CEO, Better Building Partnership, UK
- Philip Parnell MRICS, Partner - Assurance and Real Estate Valuation Lead, UK

18:15 14:15 10:15

Short comfort break

18:30 14:30 10:30

Grounded futures: Promoting sustainability in land management

During this discussion our experts will highlight the critical role of sustainable land management in achieving environmental, economic, and social objectives, including combating land degradation, enhancing biodiversity, and supporting sustainable urban and rural development.

- What are the most effective strategies for implementing sustainable land management in urban vs. rural contexts, and how can these practices be scaled?
- How can cross-sector collaboration be enhanced to address the challenges of land degradation and promote sustainable land use practices?
- What roles do technological innovations and data play in advancing sustainable land management, and what are some cutting-edge examples?
- How can policies and regulations evolve to better support sustainable land management goals, and what are the key barriers to their implementation?

Moderator: James Kavanagh MRICS, Head of Professional Practice - Land and Resources, RICS, UK

Panel:

- Esther Obaikol, Land Governance Expert, Africa
- Tim Hopkin, Founder and CEO, Land App, UK
- Alan Carter MRICS, Chief Executive, The Land Trust, UK

- Anu Verma, Asia Regional Coordinator, International Land Coalition

19:15 15:15 11:15

Short comfort break

19:30 15:30 11:30

How green is our growth: Integrating biodiversity into the built environment

This session will spotlight the essential role of biodiversity in shaping resilient, sustainable, and healthy urban landscapes. As the impact of the built environment on natural ecosystems becomes increasingly significant, this session will explore innovative strategies for preserving and enhancing biodiversity within urban planning, construction, and real estate development. Experts will discuss the benefits of biodiversity for ecological, economic, and social wellbeing, offering insights into best practices for embedding biodiversity considerations into projects and policies.

- Why is biodiversity critical to the sustainability of the built environment, and what are the key benefits of integrating biodiversity into urban development projects?
- What are the most effective strategies and design principles for incorporating biodiversity into new and existing urban spaces?
- How can policymakers, developers, and professionals work together to overcome challenges and barriers to biodiversity integration in urban environments?
- What emerging trends and innovations hold the promise for enhancing biodiversity within the built environment sector?

Moderator: Chris Fry, Managing Director, Accelar, UK

Panel:

- Julia Baker, Technical Director: Nature Services, Mott MacDonald, UK
- Sean Rooney, Account Director – Planning and Delivery, Environment Bank, UK
- Dipankar Ghose, Senior Director - Biodiversity Conservation, WWF, India
- Sophie Hazza, Senior Sustainability & Energy Consultant and Key Account Manager, Longevity Partners, UK

19:30 15:30 11:30

Parallel session by The Chancery Lane Project: Climate contracting for decarbonisation: Leveraging legal agreements for sustainable outcomes

This practical session focuses on the role of legal contracts and pre-contract processes (such as due diligence and corporate governance) in meeting your organisation's decarbonisation goals. The session will explore the idea of contracts as a collaborative tool for working across value chains and considering whole life carbon assessment. The speakers will discuss:

- An introduction to climate contracting;
- Why reflecting decarbonisation targets in your legal contracts is essential;
- The importance of supplier engagement;
- Case studies and examples of organisations who are using effective climate contracting;

- Common challenges, pitfalls and barriers;
- How to work with your in-house and external lawyers, sustainability and procurement teams to embed climate contracting principles;
- The role of contracts in RICS' WLCA;
- Green leases.

Speakers:

- Meena Kamath, Head of Built Environment, The Chancery Lane Project, UK
- Laura Noctor-King, Head of Engagement, Better Buildings Partnership, UK

20:15 17:15 12:15

Short comfort break

20:30 17:30 12:30

Holistic habitats: Integrating health, safety, and sustainability in building designs

This session focuses on the critical aspects of creating and maintaining healthy buildings, ensuring fire safety, and optimising building operations within the framework of sustainability. As the built environment evolves, the importance of designing and managing spaces that promote occupant wellbeing, safety, and environmental stewardship becomes paramount. This comprehensive discussion will cover the latest standards, practices, and strategic approaches to integrate health, safety, and operational efficiency into the lifecycle of buildings.

- How do healthy building standards and practices contribute to sustainability, and what are the key components of a 'healthy building'?
- What are the latest advancements in fire safety engineering and management that align with sustainable building practices?
- In the context of building operations, what strategies ensure efficiency and sustainability while maintaining a focus on health and safety?
- How might emerging technologies and policy developments further enhance the integration of health, fire safety, and operational sustainability in the built environment?

Moderator: Cliff L'Aimable MRICS, Managing Director of Building Control Surveyors Ltd. and Member of the Knowledge and Practice Committee and Chair of the Professional Group Panel for Building Surveyors & Building Control, RICS, UK

Panel:

- Dr. Henry Dawson, Sr. Lecturer, Cardiff Metropolitan University – Chartered Institute of Environmental Health, UK
- Raman K, Head, GBCI, South Asia
- Angela Terry, CEO, One Home Climate Solutions, UK
- Dr. Stephen Richardson, Senior Impact Director, World Green Building Council's (WorldGBC), Germany

GST 18:15 GMT 13:15 EST 08:15

Wrap up of first half of the day by conference chair: Emma Fletcher MRICS, Low Carbon Homes Director, Octopus Energy and Chair - RICS Residential Professional Group Panel, UK

Short comfort break and Americas' registration

Welcome by conference chair Alexandra Faciu MRICS, President, Alexandra Capital/Co-founder, SAM Collective, Canada & USA and Sustainability Lead, RICS Americas World Regional Board, Americas

18:30 13:30 08:30

Reviving spaces: retrofitting for a sustainable future

Retrofitting is emerging as a crucial strategy in the residential sector and in this session, we will explore the vital role of retrofitting in transforming existing residential sector towards sustainability. Participants will gain a deep understanding of how retrofitting not only reduces carbon emissions and energy usage but also improves the overall quality of life for occupants.

- Explore how retrofitting can mitigate residential converting in heat islands, especially in densely populated areas.
- What are the existing and potential policy frameworks that can promote retrofitting at a local, national, or international level.
- What are financial barriers and what revolutionary funding models and incentives can be introduced to make retrofitting accessible to all?
- How RICS Residential Retrofit Standard emerging as a frontrunner?

Moderator: Paul Bagust, Head of Professional Practice – Property Professional Standard, RICS

Panel:

- Dr Rokia Raslan, Professor | Built Environment Decarbonisation, UCL Institute for Environmental Design and Engineering (IEDE), UK
- Prof. Richard Fitton MRICS, School of Science, Engineering and Environment, University of Salford, UK
- Will Wild, Built Environment Lead, the Climate Champions Team, UK
- Debashish Das, Head iCRC New Zealand, WSP, India

18:30 13:30 08:30

Parallel session: Shifting the foundations of sustainability: confronting cultural inertia and the limits of technical solutions in the built environment

Jaime Blakeley-Glover from the **Most Sustainable Workplace** and **Joe Pitts-Cunningham** from **UK Green Building Council** present findings from their recently published research paper to explore the "action gap" in sustainability within organisations in the built environment, unpacking the barriers that engineers, architects, consultants, and industry bodies face in driving sustainable practices. Attendees will gain a deeper understanding of how to engage their workforce in meaningful action and will leave equipped with practical, evidence-based tools to bridge the gap between sustainability goals and real-world implementation.

- Understand how professions, organisations and levels of seniority are shaping barriers to progress.
- Understand the importance of a cultural approach to change, alongside technical and structural.
- Learn about the importance of adopting an evidence-based approach to people and culture.
- Find out where to start with employee engagement and the sorts of solutions that can maximize impact.

Speakers:

- Jaime Blakeley-Glover, Founder and Director of the Most Sustainable Workplace Index and Strategic Property Advisor to Bristol City Leap, UK
- Joe Pitts-Cunningham, Experiential learning Manager, UKGBC, UK

19:15 14:15 09:15**Short comfort break****19:30 14:30 09:30****Data-driven sustainability: How far can technology take us?**

In the age of information, data and technology play a pivotal role in driving sustainability initiatives across various sectors. This session will focus on the intersection of data, technology, and sustainability, exploring how organisations can harness the power of data analytics, artificial intelligence (AI), and emerging technologies to advance environmental conservation, resource efficiency, and sustainable development goals. Attendees will gain insights into innovative approaches and best practices demonstrating the transformative impact of data-driven solutions on sustainability outcomes.

- Discuss the power of data analytics in providing actionable insights for sustainability initiatives and how organisations can leverage data to identify opportunities for improvement and track progress towards sustainability goals.
- Explore the role of technologies like IoT sensors and satellite imagery in monitoring environmental parameters, enhancing biodiversity conservation, and mitigating environmental risks.
- Understand the potential synergies that arise from integrating AI and ML technologies to optimise energy efficiency, reduce waste, and enhance indoor air quality.
- Explore how these technologies can work in tandem to identify interdependencies, uncover hidden efficiencies, and drive holistic sustainability improvements.

Moderator: Anil Sawhney FRICS, Head of Sustainability, RICS, USA**Panel:**

- Georgios Askounis, Associate Director, Savills Earth Advisory, UK
- Jugal Makwana, Senior Executive - Industry Transformation and Strategic/Open Ecosystem, Autodesk, the Netherlands
- Stephanos Stephanov, Co-founder & COO, 2050 Materials, UK
- Brittany Harris, Co-Founder and CEO, Qualis Flow, UK

20:15 15:15 10:15**Short comfort break****15:30 10:30****Full circle futures: Can we redesign reality with circular economy principles?**

This session aims to shift perspectives towards a more regenerative and restorative approach, moving away from the traditional linear model of consume-and-dispose. By exploring the principles of circular economy, participants will learn about innovative practices, challenges, and the transformative potential of circular principles in creating sustainable, resilient, and efficient built environments.

- How can the built environment sector adopt circular economy principles to reduce waste and enhance sustainability?
- What are the initial steps for businesses looking to transition?
- What are the main challenges in integrating circular economy practices within existing built environment projects?
- How can challenges be overcome and what are successful implementations?

Moderator: Troy Brown, Circular Economy – Client Consulting Manager, CBRE, USA

Panel:

- Tarun Jami, Founder, GreenJams, India
- David Katz, Founder and CEO, Plastic Bank, Canada
- Sanjay Sridhar – Faculty, CEPT and Member, Sustainability Council, World Economic Forum (WEF), India
- Michael Amos, Managing Director, Waste to Wonder, UK
- Tessa Devreese, Strategic Advisor - Built Environment, ReLondon, UK

16:15 11:15 Short comfort break

16:30 11:30 Future-proofing our cities: Pathways to adaptation and resilience in the built environment

This session delves into a visionary approach for enhancing the resilience of our cities, empowering them to not only withstand but thrive in the face of climate change, rapid urbanisation, environmental uncertainties, and water-related challenges. Participants will engage with cutting-edge strategies aimed at pre-emptively reinforcing infrastructure, community, and ecological robustness against nature's extremes. The focus will be on the synergy between resilience, sustainable water management, and sustainability, underscored by innovations that facilitate dynamic, adaptive responses.

- How does resilience manifest in the built environment, and why is it a cornerstone for future-oriented urban development?
- What methodologies and emerging innovations in the built environment can enhance urban resilience, particularly in adaptive resilience and effective water management, and what policy transformations will bolster this resilience against global challenges, including water-related disasters?
- In the quest for resilient urban ecosystems, what are the pivotal challenges and transformative opportunities, particularly in managing water resources and preventing flooding?
- How can the imperatives of climate adaptation and equitable water management be seamlessly integrated into urban development, particularly in developing regions, ensuring equitable resilience and prosperity.

Moderator: Prof. Samer Bagaeen FRICS, Technical Director (Town Planning), Arcadis, UK

Panel:

- Jaya Dhindaw, Executive Director- Sustainable Cities, Director- WRI India Ross Centre, WRI India

- Mattia Donato, Associate Director, AKT II, UK
- Nicole Boothman-Shepard, Vice-President and Senior Director, Resilience + Recovery, AECOM, USA

17:15 12:15 Short comfort break

17:30 12:30 The Nexus Approach: Integrating Water, Energy, and Food for Global Sustainability

This session will focus on the Water-Energy-Food (WEF) Nexus, a critical framework for understanding and managing the interconnectedness of water, energy, and food systems in a sustainable and synergistic manner. It will explore how integrated approaches to these vital resources can enhance security, support economic stability, and promote environmental sustainability on a global scale.

- How the interdependencies among water, energy, and food sectors can impact global sustainability and how this approach can contribute to greater resource security and resilience to climate change impacts, particularly in vulnerable regions.
- Understand the main challenges in managing water, energy, and food in a cohesive manner, including resource allocation, policy coherence, and technological barriers.
- Explore how policies can be designed to better manage trade-offs and synergies among water, energy, and food sectors.
- What are the economic benefits of adopting nexus approaches, including cost savings, enhanced resource productivity, and the creation of new economic opportunities.

Moderator: Fabrizio Varriale, Place and Space Analyst, RICS, UK

Panel:

- Simon Trace, Principal Consultant, Natural Resources and Energy, Oxford Policy Management, UK
- Alicia Eastman, Co-Founder and Board Director of InterContinental Energy, UK
- Bob Hinkle, President & CEO, Metrus Energy, USA
- Prof. Carsten Kowalczyk, Associate Professor of International Economics, The Fletcher School of Law and Diplomacy, Tufts University, USA

18:15 13:15 Short comfort break

18:20 13:20 Closing keynote: Charting the course forward by conference chair

- Summary of key insights and takeaways
- Call to action: Commitments to sustainable practices and partnerships
- Looking ahead: RICS' role in advancing global sustainability goals

Speaker: Alexandra Faciu MRICS, President, Alexandra Capital/Co-founder, SAM Collective, Canada & USA and Sustainability Lead, RICS Americas World Regional Board, Americas

Delivering confidence

We are RICS. Everything we do is designed to effect positive change in the built and natural environments. Through our respected global standards, leading professional progression and our trusted data and insight, we promote and enforce the highest professional standards in the development and management of land, real estate, construction and infrastructure. Our work with others provides a foundation for confident markets, pioneers better places to live and work and is a force for positive social impact.

Americas, Europe, Middle East & Africa
aemea@rics.org

Asia Pacific
apac@rics.org

United Kingdom & Ireland
contactrics@rics.org



[rics.org](https://www.rics.org)